


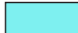






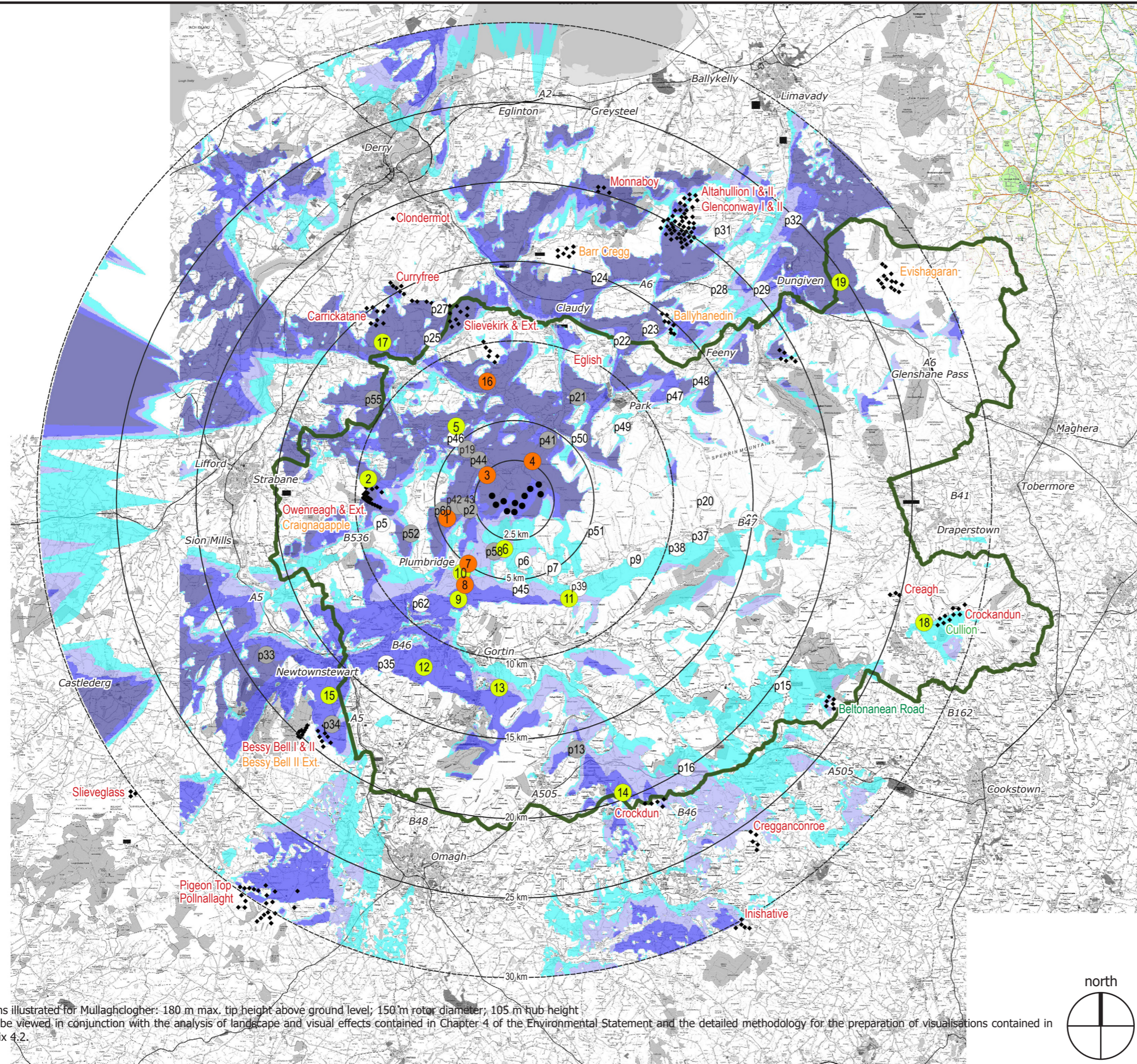
MULLAGHCLOGHER WIND FARM

Drawing 1

The LVIA Study Area

KEY

-  Mullaghclogher proposed turbines
 -  Viewpoints presented at Public Exhibition
 -  Other Viewpoints and Provisional Viewpoints being considered as part of LVIA
- Zone of Theoretical Visibility of:
-  1 - 2 turbines across 11.58 % of Study Area
 -  3 - 5 turbines across 7.37 % of Study Area
 -  6 - 8 turbines across 8.58 % of Study Area
 -  9 - 11 turbines across 11.35 % of Study Area
- Total area with theoretical visibility of at least 1 blade tip: 38.88 %
 Areas with no visibility: 61.12 %
-  Area of Outstanding Natural Beauty



NOTES:

Turbine dimensions illustrated for Mullaghclogher: 180 m max. tip height above ground level; 150 m rotor diameter; 105 m hub height
 This Figure must be viewed in conjunction with the analysis of landscape and visual effects contained in Chapter 4 of the Environmental Statement and the detailed methodology for the preparation of visualisations contained in Technical Appendix 4.2.



Shanti McAllister
 landscape planning
 and design ltd.

PUBLIC EXHIBITION

DRAWN / APPROVED: SMc / EC	DATE: Sept 2023	SCALE & PRINT SIZE: 1:250,000 @ A3	REVISION: A
TURBINE LAYOUT NO: PNIRMCR041		0 5 10km	

THIS DRAWING IS THE PROPERTY OF RENEWABLE ENERGY SYSTEMS LTD. AND NO REPRODUCTION MAY BE MADE IN WHOLE OR IN PART WITHOUT PERMISSION